



# Installation and Warranty

## Prima Collection

### Pedestal Lavatory - Vitreous China



	inches	mm		inches	mm
A	16 1/8"	410	D	31 7/8"	810
B	19 7/8"	505	E	8"	200
C	7 5/8"	195			

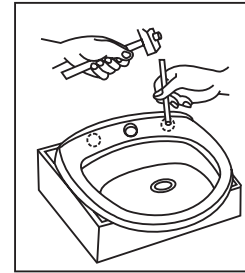
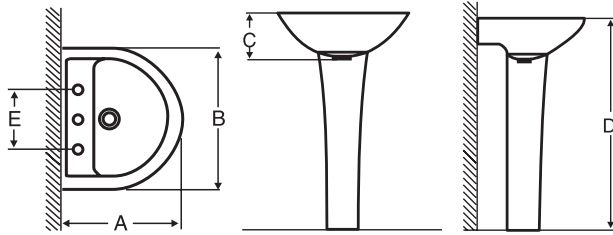


Fig.1

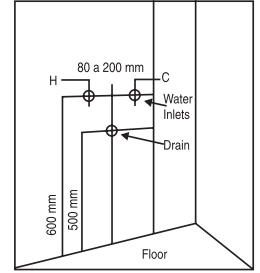


Fig.2

The lavatory and pedestal are supplied in separate packing. The two pieces are not sold separately.

The lavatory is supplied with one hole open for a single-handle faucet. A double-handle faucet can also be installed by carefully knocking out the plugs of the other two holes that come marked on the piece. Turn the lavatory upside down and these plug locations can be seen. To knock the plugs out, turn the lavatory right-side up and strike the plugs in their centers with a metal punch or a sharp-tipped hammer. If the plugs are knocked out with the lavatory upside down, the surface of the china around the holes will be damaged.

Wooden blocking must be installed in the wall between studs to support the lavatory sink

Simulate and mark the correct location of the lavatory sink (Fig.2) against the wall and placing the pedestal beneath it. Carefully mark the locations of the two holes for receiving anchor screws or lag bolts that will support the sink, and at the same time mark the location on the finished floor of the hole in the base of the pedestal for securing the pedestal with an anchor screw.

A metal bracket screwed into the wooden blocking in the wall may also be used to support the lavatory sink, besides using screws or bolts in the two supplied holes. But be careful that there will be a perfect alignment of the bracket with the two holes in the sink for screws, and also with the one hole for the screw that will secure the pedestal's base.

SANITEX does not supply the mounting bracket, anchor screws or lag bolts, or plumbing parts and fixtures, or metal fixtures.

#### LIMITED WARRANTY FOR SANITEX VITREOUS CHINA

If upon inspection of the Sanitex vitreous sanitary ware product, within a period of one year after its original purchase, it is confirmed that this product is defective in materials or workmanship, Sanitex will repair, or at its option, exchange the product for a similar model.

This Limited Warranty does not apply to local building code compliance. As these codes vary considerably, the buyer of this sanitary ware should verify with his installation contractor to guarantee compliance before installation.

This Limited Warranty does not cover any Sanitex sanitary ware product that has been impaired by accident, abuse, improper installation, maintenance, or removal from its original place of installation and reinstalled in another locale.

To exercise this Limited Warranty the original consumer purchaser should make a claim in writing, together with proof of the purchase of the product to Sanitex - Sanitários Togni Ltda., Av. Antonio Togni, 2441, CEP 37704-356, Poços de Caldas, MG, Brazil. The original purchaser is responsible for prepaying and bearing and packing, shipping, or other incidental expenses incurred in connection to warranty services.

The option held by Sanitex to repair or to replace the product under this Limited Warranty does not cover labor costs or other costs related to the removal, installation, transportation, or other incidental or consequential damage to the product.

Some States do not allow the exclusion to limitation of incidental or consequential damages, therefore the above exclusion and limitation may not apply to you.

This Warranty gives you specific legal rights and you may also have other rights which vary from State to State.